



## Editor's Pics

### Christmas and Community

For me, every Monday morning at MAG is like Christmas. Gathering together with fellow artists is a joy. I've always enjoyed the community of like-minded creators. In my youth, I joined Arthur Phillips' art class down at Glenelg. The people there were kind, and there was much laughter.

Same camaraderie when I was living in Melbourne and joined an art class my friend had organised to help a struggling artist friend of hers. The sense of belonging this teacher experienced boosted his confidence and his classes continued to grow and flourish.

When I returned to Adelaide, I searched for art classes. It seemed everywhere I looked, the classes were full.

Then, in 2009, through a local Writers' Group, I met Glenys, who introduced me to Marion Art Group ... and here I am. Connections, that's what community is all about.

Many thanks to the past leaders of MAG who have kept the group going for over 45 years. In particular, much gratitude to our latest president, Jim, for his hard work over the past 8 years and for keeping Marion Art Group going, growing and thriving through the challenges we have faced together as community.

Have a wonderful Christmas!

~ Lee-Anne Kling



### Community, Christmas and Food

### Where is...

Editorials, Events... P.1

MAG Muse & Works in Progress P.2

Art Tips & President's Ponderings continued:  
... p.3

Events, Exhibitions, and Ode ...p.4

## MAG EVENTS

Studio sessions from 9.30am  
till 12.30pm every Monday

### Special Dates 2026

#### Monday January 5

Studio Sessions Start

#### Monday January 19

Committee Meeting  
& "Summer" Exhibition Ends

#### Monday February 2

Optional Portrait Session

#### Monday February 24

Committee Meeting

#### Monday March 2

Optional Portrait Session

#### Monday March 30

Committee Meeting

&

Newsletter Release

## President's Ponderings



I've been thinking about what to say in my final President's Ponderings after 8 years in the position. I may have been obtuse at times and occasionally controversial. Hopefully, in this column, I've summed up what we've been engaged in at the time and offered some commentary about issues arising and encouragement to all.

As I complete the last few weeks of my time as president, I guess I have mixed feelings. I will miss the camaraderie of volunteering my time with my fellow committee members, all of whom have gladly offered and contributed the skills and ideas they can bring to an art group of our nature.

On the other hand, it will be good to paint more often in the group Studio Sessions and enjoy the ambience of creating and relating to others in our group without being distracted by committee duties.

When I first came to the group in 2013, MAG was still using hand-written ledgers for financial records, and it was in 2014 that we started the process of developing our own website. In 2015, we rewrote the original constitution from the early 1980s to upgrade it to the 2000s.

[Continued p.3]

Marion Art Group Website:  
[marionartgroup.org](http://marionartgroup.org)

## The Muse of the MAG — Bowden Art Community

Within the suburb of Bowden, there's a good example of an art community that has emerged.

Arts-based changes to the culture and environment of Bowden began serendipitously in the 1980s when interested residents began working individually, then collaboratively, in voluntary groups, to beautify the suburb.

The local council has a Public Art Policy, encouraging community art through art grants, supporting public art commissions and community projects.

Hindmarsh Greening is one large group of volunteers who have been meeting regularly since 1989, initially to plant vegetation, then later to include a subgroup of artists interested in street art.

Hindmarsh Greening is responsible for much of Bowden's colourful mosaic street planters and Stobie poles. They mostly use donated materials while also tapping into council support.

A map showing the location of community street art is available on the council website.



*Bowden bird Walk news hero  
courtesy of SA power networks  
website*

During the 2024 SALA festival, the Bowden Bird Walk was opened. This beautiful display of 30 bird mosaics on Stobie poles commemorated the 100th anniversary of "Stobies". This project took Hindmarsh Greening several years to design and complete. The Bird Walk self-guided art trail is found in Bowden's Thirteenth Street and nearby stretches of Drayton and Quin Streets.

The large urban renewal project on the former Clipsal and Gasworks industrial sites has provided new opportunities for community art. During the early construction period, wire safety fencing was used as a large format for local artist Aiyudot Khom's creation, "Uniquely Bowden," on seven fences along Gibson Street. Several of the completed multi-story apartment buildings display huge art murals, adding a vibrant aesthetic to the area. The new Plant 4 Centre is a popular venue for all types of artistic activities and craftspeople who sell at markets.

Like begets like, and the gradual growth of an artistic culture and community in Bowden has naturally attracted artists, art galleries and studios to the area.

*~Research by Julie Luker*

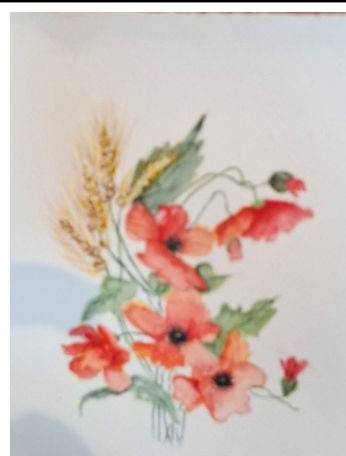
## Works in Progress



*Yellow Daisies by Moira Doherty*



*Bright Impressionist Flowers by Rob  
Curkpatrick*



*Makings of a Floral Card by Jill  
Bernard*

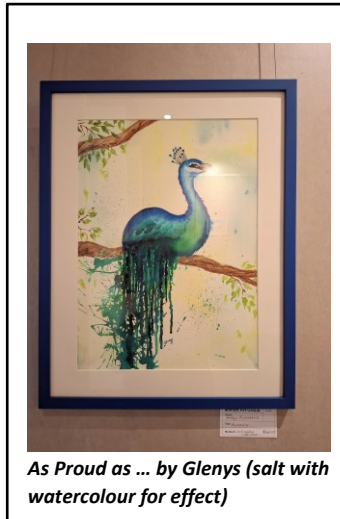


## Watercolour Ground

The other week Pauline was talking with Craig who has been at *Eckersley's Art Supplies* for 30+ years. He mentioned this—**Watercolour Ground**. (See photo below)

It enables an artist to undercoat a canvas and then use watercolour paints.

Needless to say, Pauline was excited about the possibilities.



*[President's ponderings continued from p.1]*

In 2019-20, Covid squeezed us out of the old Marino Community Hall (and back in a couple of times). Plans to knock it down and rebuild were happening at the same time and challenges were presented to the committee over the next several years. I'm proud to say we took on those difficulties and won!

Here we are today, about to start a new era with the Marion Art Group in our wonderful new facility at Marino. —>

## PORTRAITURE PRACTICE MAKES PERFECT



**1<sup>st</sup> Monday of Month.**

Pauline O'Sullivan, I believe, will make an ideal President. Pauline is similar to me in some ways, but thank goodness, different in others. She comes from a very artistic, leadership background with some new, fresh and exciting ideas for our group. I look forward to continuing being part of a continually progressive art group that moves into the future with flair and creativity.

I wish you all a very Happy Christmas and New Year.

~ Jim Green

## Muses from MAG Summer Exhibition



*Long and Winding Road by Stephen Brown*



*Aurora by Eric Gent*



*Clare Valley summer*

*By Julie Luker*

*Photos in this edition have been taken and provided by Lee-Anne Kling, Jim Green, Lyn Thomas & Pauline O'Sullivan.*

# In the Loop

## Brighton Central Exhibition



**Wonderful Variety**



**Sales Success**

### Exhibition Opportunities

**Rotary Art Shows and other Art shows—**  
Go to [Gallery247 - Original Australian Artwork](http://Gallery247.com)  
for more information exhibitions, forms and entry dates.

**Upcoming MAG Exhibition — “Summer “at Marino Community Hall  
December 2025/January 2026**

### Check Out the MAG Website

Log in to [marionartgroup.org](http://marionartgroup.org) to view.

**Privacy Policy:** MAG members' personal information will be limited to MAG-purposes only. This information will not be conveyed or sold to a third party (including electronic means), without the member's consent. MAG will not be held responsible for any unintended use or disclosure of information.

To contact the Editor or MAG committee, go to the MAG website for details.



### Ode to our Baristas

Since 2018, come rain or shine,  
You've brewed our Mondays back into line.  
Through Covid's pause and halls anew,  
You've kept us all well-cafeinated too!

From Uniting days to Marino's nest,  
You've honed each move and done your best.  
With coffee, smiles, and steady grace,  
You've made our art a happier place.

Now “Little Nest” will take the reigns —  
But none can quite replace Elaine ...  
Nor Chantelle's cheer and quiet refrain —  
Our heartfelt thanks again and again.

With love from all the artists at MAG 2025

© Pauline O'Sullivan 2025



**One Happy Customer from the Trading Table**

### Subscription Fees for 2026 — Half Yearly due

Remember you can pay your 2026 Annual Fees by bank transfer, starting from January next year. \$150 for the year or two payments of \$75 half yearly. Please enter your name in the reference box so we know who has sent their money. The **MAG bank details are: BSB: 085333, ACC: 777737765**  
EFT pos will also be available, if needed.

**Reminder:** For members who have paid \$75 for the first half of the year, the balance for the \$150 is due by the end of July.