



Editor's Picks

What do we mean by "Muse"?

According to the dictionary, a muse is a "source of Inspiration".

While teaching my friend to paint, we came across a fascinating subject. A man wearing a bowler hat, aristocratic pose, sad brown eyes set in a disproportionate large head. He became our muse for the afternoon.

Later, I discovered this man to be Henri de Toulouse-Lautrec.

Rather pleased with my impressionist rendition of him (especially since I'm not-so-flash with portraiture), I hung his picture in my study. Inspiration to perhaps try portraits in the future.

However, it's only in the last few weeks, as I researched Henri for the MAG newsletter, I've discovered who this character actually was. Since then, his life story and art have become my muse. (Check out the "Muse of the Mag" on p2.)

A muse doesn't have to be the beautiful, creating chocolate box pictures. Oftentimes, the most interesting subjects are imperfect, disproportionate and broken. As an example, I remember one of our Mag artists painting a portrait of an old Indian man with many wrinkles from a life well-lived.

As I'm learning, fascinating artists and the ones we find most brilliant, their artwork selling in the millions of dollars, are the ones who have struggled to overcome adversity—such as Henri de Toulouse-Lautrec.

~Lee-Anne Kling

The Muse



MAG EVENTS

Studio sessions from 9.00am
till 12.00pm every Monday

Special Dates 2025

Monday March 31

Committee Meeting

Monday April 7

Optional Portrait Session

Monday April 21

Easter Monday—No Session

Monday April 28

Glenelg Exhibition begins

Monday May 5

Optional Portrait Session

Saturday May 10

Exhibition Ends

Monday May 26

Committee Meeting

Monday June 2

Optional Portrait Session

Monday June 30

Committee Meeting

Monday July 6

Optional Portrait Session

Newsletter Release

Marion Art Group Website:
marionartgroup.org

Where is...

Editorials, Events... P.1

The Muse of the MAG &
Recent Renderings P.2

Art Tips& Workshops:
... p.3

Events, Exhibitions,
President's Ponderings
...continued...p.4

President's Ponderings



Welcome to all
members, both ongoing and new.

2025 marks a significant milestone
for our group.

Starting in 1978, the Marion Art Group has experienced many twists and turns including some important decisions about our home base. We originally moved to the Marino Community Hall in 1989 and celebrated our 40 years there, in 2018. We will move back into the newly rebuilt Marino Community Hall this year.

The hall is managed by a wonderful committee of local volunteers headed by Chair, Rob George. This Committee comprises of interested community members and representatives from various users of the hall, (including Sue Davel from MAG). They have fought hard to remain the Managing Group and have offered their volunteer services and expertise to run the new hall efficiently. One of the more recent tasks of the Marino Community Hall Management Committee has been working with the City of Marion Council to agree on an acceptable lease agreement. As a result of this agreement, MAG member fees for 2025, remain the same as 2024.

[continued p.4]

The Muse of the MAG

Henri de Toulouse-Lautrec

Born in 1864 into a French noble family Henri de Toulouse-Lautrec had a privileged, but challenging life. He was born with a genetic condition which meant his growth was stunted. As a child he was a delicate yet ordinary looking, and very intelligent. However, things changed in his teenage years. His nose grew too big, as did his lips and head. As if he didn't have enough challenges, after breaking one leg after another, he had to spend months in convalescence. Then, his legs grew no more. His mother encouraged him to paint, as he found solace in art.



Self-portrait

So, painting became his passion. He eventually ended up attending Cormon's art classes in Paris where he met up with other impressionist artists such as Cezanne, Pissarro, and Vincent van Gogh. Although Vincent van Gogh was about ten years older, Henri and Vincent became friends.

Around this time Henri was introduced to the exciting nightlife of the common people in Moulin Rouge, Montmartre.

This became his muse.

Henri would often be found there amongst all this lively entertainment, sketching the people around him. He felt more akin with the common people who accepted him for who he was on the inside, as a person. Some people of that time and place remarked his personality was huge, his wit biting and his eye for art so amazing, they barely noticed how he looked. *[continued p.3]*



La toilette, oil on board, 1889

References: Wikipedia—
https://en.wikipedia.org/wiki/Henri_de_Toulouse-Lautrec

Toulouse-Lautrec and the Paris of Cabarets by Jacques Lassaing

The World of Van Gogh by Robert Wallace



Muse of a muse—Mr. Toulouse paints Mr. Lautrec (1891), photomontage by Maurice



Moulin Rouge—Spot Henri's Cameo

Recent Renderings



Outback scenes with colour by Rob Curkpatrick



Magpie by Wendy Carman



Brighton Sculpture Festival by Maggie Turner



Boulders in acrylic by Glenys Brokenshire

How do you keep acrylic paint from drying too quickly in summer?

For acrylic painting, always keep a spray bottle of water handy to keep your paint wet and workable especially on hot days. Alternatively use a “stay wet” palette, available from most art suppliers. An airtight plastic container could also be used. Another option is to add mediums to your paint to slow drying time.

Floetrol is a paint conditioner available from Bunnings used to help acrylic paint to flow. It can also be used in conjunction with alcohol and water to produce a pouring paint.

How to improve your painting?

Practice, practice, practice: Draw, paint or create something every day, even doodling counts.

Don't be afraid to try different mediums, styles and surfaces.

Don't be too critical of your own work. Remember, it's only paint.

Have fun and enjoy the process. ~ *Henny Reddon*

[Henri de Toulouse-Lautrec continued from page 2]

Henri depicted scenes with a graceful flow of the brush and simple lines inspired by Japanese art. His posters, designed for advertising, were a hit and often made the people in them famous.

The hard and fast life, and alcohol addiction eventually caught up with Henri. He died in 1901 aged 36. However, his legacy in art lives on.

~ *Lee-Anne Kling*

PORTRAITURE PRACTICE MAKES PERFECT



1st Monday of Month.

I paint things as they are. I don't comment. I record.

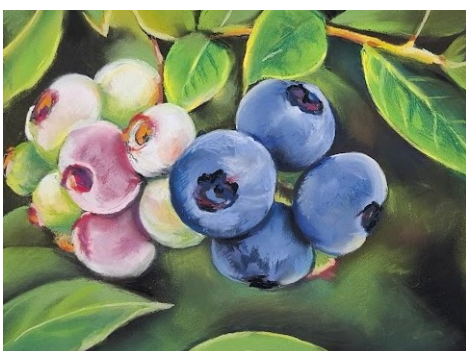
~Henri de Toulouse-Lautrec



Poster Promoting Performer, Jane Avril—A Forerunner of Pop Art by Henri de Toulouse-Lautrec



Desert Storm Brewing (pastel) by Lee-Anne Kling



Blueberries(pastel) by Suzanne Warren-Smith

More Muses: Pastel, Pen and Pencil



Zentangles (pen and pencil) by Christine Creese

Photos in this edition have been taken and provided by Lee-Anne Kling, Jim Green, Lyn Thomas & MAG archives.

In the Loop

Musings for Mothers' Day

MAG's Exhibition at Bayside Village, Glenelg is fast approaching.

After several years in hiatus from this venue, we're looking forward to exciting and successful sales at Glenelg from Monday, April 28 to Saturday May 10.



Keen MAG members lining up to register for the Bayside Village, Glenelg exhibition.

Exhibition Opportunities

Rotary Art Shows and other Art shows—
Go to [Gallery247 - Original Australian Artwork](#)
for more information exhibitions, forms and entry dates.

Check Out the MAG Website

The website is primarily for the public to find out about us. We try to up-date the website every couple of months. Feedback from members to keep the website accurate and current is gratefully received.

Browse through 42 issues of newsletters over many years to access Marion Art Group's history.

Privacy Policy: MAG members' personal information will be limited to MAG-purposes only. This information will not be conveyed or sold to a third party (including electronic means), without the member's consent. MAG will not be held responsible for any unintended use or disclosure of information.

To contact the Editor or MAG committee, go to the MAG website for details.

[President's ponderings continued from page 1]

It will be a beautiful, modern facility with the latest technological advantages and includes a small café and gallery space along with other shared spaces with other groups from the community.

It would be true to say that my 'muse', (at the moment), is a rather significant building that occupies my thinking. Her locality and style have greatly influenced my latest artwork.

More information about the new hall and our transition into it, will be available soon.

~Jim Green.

Victor Harbor Art Show 2025

The Victor Harbor Art Show was held in January 2025. This year the show achieved fantastic results. 512 artists participated. 1323 artworks were accepted. 395 pieces sold generating an impressive \$277 732 in sales. 30% of exhibited works sold. 6500 visitors went to the exhibition in the week.

If you are interested in exhibiting next year, keep an eye out of the Victor Harbor Art Show website for the 2026 Art show details. If you get a chance to visit the show, it is well worth a look. The standard of the paintings is amazing.

A number of our art group enter this exhibition every year and lots of us have sold paintings there.



Kangaroo (coloured pencil) by Lyn Thomas

Some of us team up with another artist, one taking the paintings there, and the other picking the paintings up, which means only one trip per artist is necessary.

Several paintings with price tags of \$10 000 sold while the painting award of \$15 000 was won by John Lacy, an artist with whom many of you would be familiar.

~Maggie Turner

Subscription Fees for 2025 —

For members who have paid \$75 for the first half of the year, \$75 for the second half of the year is due by the end of July. (Cash, EFT pos or bank transfer) Please enter your name in the reference box so we know who has sent their money. The **MAG bank details are: BSB: 085333, ACC: 777737765** EFT pos will also be available, if needed.

Reminder: For members who have paid \$75 for the first half of the year, the balance for the \$150 is due by the end of July.