



## Christmas Cheer



## Where is...

Editorials, Events... P.1

Remembering Les  
Shute, & Recent  
Renderings P.2

Art Tips & Exhibition  
Review photos: ... p.3

Events, Exhibitions,  
Hall Progress ...p.4



## Editor's Pics

### Perfection is Over-rated

Is my work good enough? We at MAG have all experienced that moment when joining. Each one of us were required to present several recent samples of our artwork for assessment before being accepted. There was that nervous wait as the committee inspected our offerings. Thoughts of *Am I worthy?* ran through our anxious minds. Especially as we roamed the studio and spied the brilliant renderings in progress.

Even well-seasoned MAG members, like me, have been challenged to "lift-my-game" and I have moments when I doubt my painting is perfect. Lots of times works are squirrelled away never to see the light of day because I consider them not perfect.

Sometimes, in striving for perfection, we keep tinkering to the point that we over-do it. It's knowing when to stop. Rest your painting. Look at it with fresh eyes over a couple of weeks.

Or are we trying too hard to implement the improvements others have suggested we should do? Again, it's your painting. If you are happy with it, relax. Do what works for you. The first painting I sold, my husband said was boring. But hey, someone liked it.

It is fair to say, art reflects life. You can't please everyone all the time. The last few years at MAG have been challenging. Some of us have struggled. We haven't been a "perfect" bunch of painters. Despite our flaws, the group is growing and thriving. And happy chatter fills the studio on Monday mornings.

Merry Christmas ~ Lee-Anne Kling

## MAG EVENTS

Studio sessions from 9.30am  
till 12.30pm every Monday

### Special Dates 2025

**Monday January 13**

Studio Sessions Start

**Monday January 20**

Committee Meeting

**Monday January 27**

Australia Day Holiday

**Monday February 3**

Optional Portrait Session

**Monday February 24**

Committee Meeting

**Monday March 3**

Optional Portrait Session

**Monday March 24**

Committee Meeting

Newsletter Release

## President's Ponderings



As we wind up for 2024 at Marion Art Group, we can reflect on many positive thoughts about how we are progressing as a group and what we have achieved during the year.

Over time (now 46 years), the constantly changing personnel on our committee of volunteers have met challenges but have always tried to provide a stimulating and affordable experience for our members.

As we move into a new facility, early in 2025, there are sure to be some anticipated and other unforeseen issues and expenses to deal with. The committee will be trying to continue our usual program of activities, but they will consider implementing new or old ideas to help keep things interesting. It will depend on how smooth the transition to a new facility becomes.

General members will be asked to remain patient and help as they are able to make the move to the new version of the Marino Community Hall an exciting and inspiring experience.

Happy Christmas and New Year to you all. Looking forward to seeing you back at the Seacliff Uniting Church Hall starting on Monday 13<sup>th</sup> January 2025.

Marion Art Group Website:  
[marionartgroup.org](http://marionartgroup.org)

## Remembering a Gentleman

### Les Shute

Les joined our group in the early 2000's. He left the group at the end of 2022 due to ill health. He passed away on Tuesday 5 November 2024. I attended his funeral Friday 15 November.

He was an exceptionally fine artist and a quietly spoken gentleman who had a career as a pharmacist, living and working in Whyalla for three decades with his family. His involvement with the Salvation Army and his musical and artistic skills continued into the rest of his life.

He has been a member of the Whyalla Art Group, the St Mary's Art Group and then the Marion Art Group. Les was always willing to share his experience as an artist with us less experienced members of the Marion Art Group, but only if he was asked to. A very modest and cheerful man.

He painted a variety of subjects, but he was particularly fond of depicting sailing boats in his seascapes in the latter years of his involvement with us.



With his art buddies

I have a very delicate miniature canvas on a tiny easel on my dining room shelf. This Les Shute miniature depicts a sailing scene, beautifully painted.

Rest in peace Les.

Jim Green



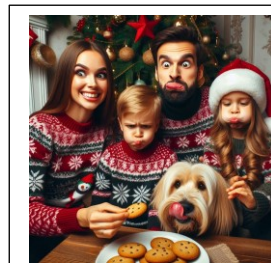
Minature of Seacliff Beach  
by Les Shute

### Some Art Jokes for the Ho-Ho-Ho-Holidays

**Why did the Christmas ornaments go to art class?** To become well-rounded in all mediums!

**How do you know an artist painted your Christmas card?** Because it's framed!

**What do you call a snowman who loves abstract art?** An avant-garde snowman!



## Recent Renderings



Orchids by Linda Huppatz



Snow-capped Mountains by Rosmarie Libiseller



Popular: Beach People and their dogs by Pip Hanlon



## Art Tips

### The Versatility of ACRYLICS.

I met award winning artist, Allison Parsons, for the first time recently. I told her how much I admired her 'best in show' painting at the Victor Harbor Art show earlier this year. We discussed the realism she achieves with 'glowing' morning light in many of her paintings. She modestly explained that her use of oils was the key factor in achieving this.

This reminded me to use **gloss medium** for acrylics, instead of water, when preparing and using washes/glazes. This can help provide more of a 'glow' to the light filled areas of our acrylic paintings. More obvious 'glowing' glazes can be achieved with higher proportions of gloss medium.

The addition of a little **gel medium** will provide a thicker consistency for textured impasto changes in colour. The gel medium also helps the luminosity of your colours and helps retard drying time. **Modelling paste medium** can be added when using a palette knife for additional texture.

It is worth trying some of the many **mediums** on the market to help make your acrylics work for you in various interesting ways.

~ Jim Green



Mediums for Acrylic paint

### Ideas for Cleaning Your paint Brushes

- 1- Soak hardened artist paint brushes in neat fabric softener. Helps restore brush to working order again.
- 2 - Methylated spirits will break down water-based house paint. If you need to know what your surface is for a "re-paint", rub with methylated spirits. If you get some paint on the cloth, you have a water-based paint. If you do not get any paint residue, then your surface is oil (aka 'alkyd') based paint.

This method allows you to treat accordingly.

Let's hope there's not so much of the 2nd tip required...Who wants to paint their house these days?

~ Pauline O'Sullivan

### PORTRAITURE PRACTICE MAKES PERFECT



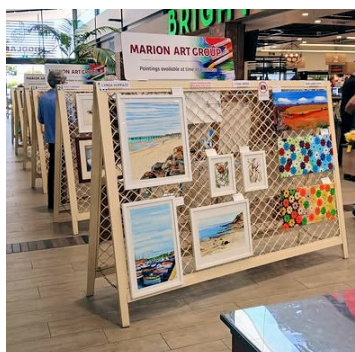
1<sup>st</sup> Monday of Month.

### Art Insights

"Creativity is allowing yourself to make mistakes, art is knowing which ones to keep."

— Scott Adams

### Brighton Central Exhibition in Review



View of success



Many sales



Beautiful works

Photos in this edition have been taken and provided by Lee-Anne Kling, Jim Green, & Lyn Thomas.



# In the Loop



## New Marino Community Hall

### A work in progress...



Foundations laid



Recent Developments



Artist's rendition of anticipated new hall

## Exhibition Opportunities

**Rotary Art Shows and other Art shows—**  
Go to [Gallery247 - Original Australian Artwork](http://Gallery247.com)  
for more information exhibitions, forms and entry dates.

### Check Out the MAG Website

Over the past few months, the MAG Website has undergone "renovations" to simplify and become more visually appealing.

Log in to [marionartgroup.org](http://marionartgroup.org) to view the changes.

**Privacy Policy:** MAG members' personal information will be limited to MAG-purposes only. This information will not be conveyed or sold to a third party (including electronic means), without the member's consent. MAG will not be held responsible for any unintended use or disclosure of information.

To contact the Editor or MAG committee, go to the MAG website for details.

## All Good At MAG

How fast the year has flown! Our second Christmas at the Seacliff Uniting Church is almost upon us and so I reflect on the year gone by and my experience of our art group.

I have really enjoyed our stay at this hall and I'm grateful that we have been able to enjoy Brews Without Views! Thank you, Elaine and Chantel and your supporters for continuing to provide wonderful coffees during the year.

There have been challenges, not least the number of car parks and the allocation of suitable disability parks but I think that we have finally got there. The storage facilities have been tricky, but we have managed quite well. Thank you to all the members who have helped set up the hall in the mornings.

I joined MAG during Covid, so my first memories are coated in disinfectant and face masks. Those were worrying times and membership declined. Things have certainly improved since then. Having had exposure to the local community through the Brighton Exhibition, our membership is growing. When we move to the new premises, we will get a lot more exposure in the local media and I'm sure that our membership will continue to thrive.

I have enjoyed meeting so many lovely people in this group. We range in age and interests, but our common love of art is what brings us together. There is such diversity in the club, not to mention enormous talent! One of the wonderful aspects of our club is the willingness of people to share ideas and methods. We are not a teaching group, but I have certainly learnt so much from speaking to people about their art. I am so inspired when walking around the room. I love seeing the large canvases transformed and new techniques being applied. We really do have a wealth of knowledge in our group and people who are willing to share their skills.

This next year promises to be a very good one. We are looking at having a couple of exhibitions as well as being able to exhibit in the new premises. Hopefully, the new building and café will attract lots of visitors throughout the year.

Thank you to everyone for your ongoing support of our art group and thank you to all the committee members for their hard work during the year.

~Sue Davel

### Subscription Fees for 2025 — Half Yearly due in January 2025

Remember you can pay your 2025 Annual Fees by bank transfer, starting from January 13 next year. \$150 for the year or two payments of \$75 half yearly. Please enter your name in the reference box so we know who has sent their money. The **MAG bank details are: BSB: 085333, ACC: 777737765** EFT pos will also be available, if needed.

**Reminder:** For members who have paid \$75 for the first half of the year, the balance for the \$150 is due by the end of July.