

## Editor's Plcs

### Borrowed Art

With our first exhibition in three years, we're all pretty conscious about copyright, right? It's only fair that we sell our original artwork. But, what does it mean to be original? Where do we draw the line in how much we can "borrow" from say an old master like Van Gogh? Is it wrong to paint a scene like Van Gogh's bedroom? Or use a similar composition? Or style?

After all, whole movements have grown out of following a particular style, and technique like the Impressionists, or Cubists.

And yet, while some artists generously share their secrets, others hold tightly to the techniques they have developed. By holding onto such information, they hope to gain an edge—for sales.

However, when skills and techniques are not shared, that artist's secret dies with them. The fortune grows, yes. But how much richer the community is when artists share their ideas, techniques, and skills as we do in MAG.

~ Lee-Anne Kling



*Borrowed from times past...Before Covid (BC)*

### Where is...

Editorials, Events... P.1

Artist of the MAG &  
Recent Renderings P.2

Art Tips: ... p.3

In Memoriam, Events,  
Exhibitions, President's  
Ponderings  
continued...p.4

## MAG EVENTS 2022

Studio sessions from 9.30am till  
12.30pm every Monday (except  
public holidays)

### Special Dates for 2022:

**Monday October 17**

Exhibition at Brighton Central  
Commences

**Sunday October 30**

Brighton Central Exhibition Finishes

**Monday October 31**

Committee Meeting

**Monday November 7**

Portrait Session

**Monday November 14**

Gallery M Exhibition April/May 23  
Information & Preparation

**Monday December 5**

Christmas Break up:  
Sharing progress for Gallery M, AGM,  
& Newsletter Release

## President's Ponderings



It is timely to comment on our Brighton Central Shopping Centre Exhibition on the eve of its opening Monday October 17<sup>th</sup>. As many of you know, MAG's Shopping Centre Exhibition 'systems' have been in place for many years. The experienced members of the group can be confident that *most* procedures are the same as three years ago when we last exhibited at a shopping centre.

Of course, the 'borrowed' or 'recycled things' in life sometimes need some repair, refurbishment or replacement. A new exhibition table means some slight differences to our systems. Some of these are critical to the smooth running of the exhibition. For example, unlocking the table drawers!!

There will be a different method of passing on the day's takings, to our Treasurer who will be there to pick up the taking's bags at the end of each day.

[continued page 4]

## Artist of the MAG

### Andy Wilkinson



My family emigrated to Australia in 1964. The day we arrived in Adelaide was June 13. This coincidentally was when the Beatles were in town. From Outer Harbour, we were bussed to Elder Park Hostel situated behind Adelaide Swimming Centre.

The Beatles were staying in the old South Australian Hostel opposite the railway station. We hit North Terrace, bus slowed to a crawl, and 50000 beautiful young people crowded the road to greet my brother and me (ha-ha). What a welcome to S.A.

My interest in Art is life-long, from drawings based on comic characters to present day paintings.

I have a family tree parchment from my mum's side which shows a linkage to the Sargent family, and the famous American artist, John "Singer" Sargent.

My main influences are the Impressionists (Cezanne, Monet, and Van Gogh), and the Pop Art genre. I have visited various galleries around the globe: London, Paris, Madrid, Amsterdam, as well as all the Australian capitals.

Since joining MAG, I have completed a painting a month.

I recently sold a still life from objects set up by our group. It was painted in the Impressionistic style using acrylics and pen.

Also recently, the Dunes Retirement complex where I live, held their annual Art display. This comprised of varied entries from needlework to Lego. I was fortunate enough to win the perpetual trophy donated by Prof. Ian Maddocks. This winning entry was a portrait of Ian.

Thanks to the encouragement and advice of fellow MAG artists, I was able to make improvements to this work which would have helped.

In closing, I'm looking forward to many more years of participation with this talented group of artists.

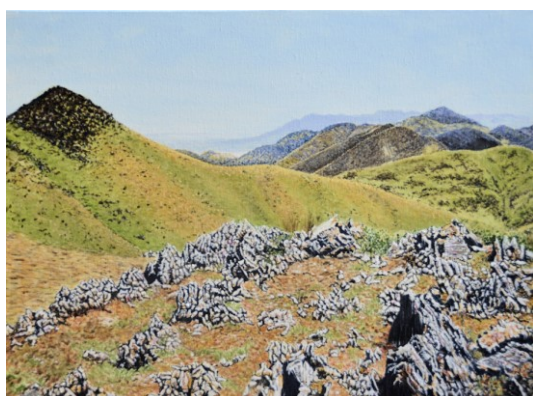


*Egret and Ell by Andy Wilkinson*

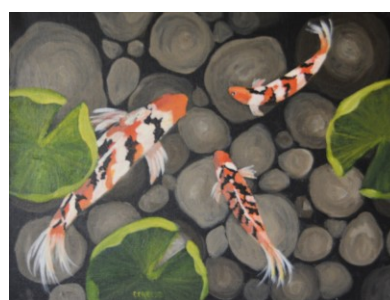


*Storm Over  
Somerton Beach  
by Andy Wilkinson*

## Recent Renderings



*"Dutchmans Stern" in Acrylic by Norene Cutts*



*"Koi" in acrylic by Christine Creese*



*Rustic Home  
in  
Watercolour  
by Jill  
Bernard*



*Alpine Scene in Watercolour by Rosmarie Libiseller*



# Art Tips



*Piccadilly Vineyards by Andy Wilkinson*

## TRANSFER OF PAPER NAPKINS



Here is what I did for this art piece (above).

Used a small triangle of serviette with white backing layer removed.

How did we transfer table napkins and tea bags onto canvas?

Gloss medium... the runny one... NOT the thick gel medium. I use Liquitex gloss medium and varnish.

After putting some medium on the canvas, I add the tissue.

Then with a brush loaded with medium, I brush the paper down flat and work out any air bubbles.

Don't do it for too long or the tissue will tear.

Be sure to have a fully loaded brush.

Once dry, you can go over it with matte varnish if you don't like it glossy.

**Rice Paper Print:** I photocopied the pages I wanted printed. Make sure you place a few sheets into the paper tray of your printer. When it prints, it will print on the first but pull the others through to make up the same thickness as ordinary paper. Then proceed the same as serviette transfer.

~Judith Hombsch



## PORTRAITURE PRACTICE MAKES PERFECT



**1<sup>st</sup> Monday of Month.**

## Art Supplies Galore...

I had the most wonderful jaw dropping experience recently. Popped into Marion Officeworks to get a paint pen.

They now have a complete art shop there. All well-known expensive brands of paints, brush, mediums plus less expensive ones.

It means no more long trips to Art to Art or buying online. So excited like a child in a lolly shop.

~Judith Hombsch

## ...At Officeworks



## Library

Our faithful old library is now newly arranged into one cupboard.

Books, DVDs, and photos can be borrowed on an honour system.

Many thanks to Henny Redden, Sue Davel, and Jan Flynn, and Norene Cutts for their efforts.

For members who prefer to pay their fees etc by bank transfer, the bank details are as follows:

**Account name:**  
MARION ART GROUP INC.  
**BSB number:** 085 333  
**Account number:**  
77773 7765

**IMPORTANT:** Members will need to put their surname in the reference box, so we know who the payment is from.

*Photos in this edition have been taken and provided by Maryla Wawrzycki, Lee-Anne Kling, Judith Hombsch, Henny Redden & MAG archives.*



# In the Loop



## Ex-President MAG Eileen Shaw

Eileen Shaw, a past President (1998 & 1999) and Life Member, passed away on Saturday 3<sup>rd</sup> of September aged 98. Her daughter Margaret contacted us via the MAG website with this message. "The Marion Art Group was a big part of her life, as well as mine, as every Saturday morning after our weekly market outing, we would have to call into Premier Art in Gilles Street to get supplies."

Eileen made a wonderful contribution during her time with the group. Rest in Peace.

~ Jim Green

## Exhibition Opportunities

**Ongoing — Brews and Views Café**

**Brighton Central — October 17-30, 2022**

**Rotary Art Shows and other Art shows—**

**Go to [Gallery247 - Original Australian Artwork](#) for more information exhibitions, forms and entry dates.**

## Check it Out...

*The Old MAG Website has been adjusted. Log in to [marionartgroup.org](http://marionartgroup.org) to view the changes.*

*The Artist's Gallery is no more, but you can see upcoming events, and the Newsletter.*

**Privacy Policy:** MAG members' personal information will be limited to MAG-purposes only. This information will not be conveyed or sold to a third party (including electronic means), without the member's consent. MAG will not be held responsible for any unintended use or disclosure of information.

To contact the Editor or MAG committee, go to the MAG website for details.

## Remembering...



## Dennis Robinson

Very sad to announce that Dennis passed away on Wednesday 30<sup>th</sup> of June.

Dennis joined Marion Art Group in May 2013 and first exhibited with us at Marion Shopping Centre, October 2014. He was always a positive, cheerful, and skilful member who enjoyed his time at the group on Monday mornings. With a background as an architectural technician and builder, we saw many a fine watercolour of buildings, flow from his brush. He also diversified with landscapes, flowers and water scenes and was particularly interested in capturing typical Australian dry creek beds in a variety of media.

Dennis continued to exhibit with us at various shopping centres and other venues in the ensuing years. Notably, at our latest shopping centre exhibition at Brighton Central in 2019, he again sold a wonderfully expressive watercolour. We will miss Dennis enormously. Rest In Peace.

~ Jim Green

*[President's ponderings continued...]*

Hopefully all rostered supervisors will feel relaxed about attending their duty sessions. It is an enjoyable experience helping to promote our group, chat with the public and hopefully help process many sales. Members new to our exhibitions have been paired with an experienced member.

To recycle an old phrase 'safety in numbers', several of us at the exhibition at any given time would be helpful. Please feel free to come to the shopping centre often throughout the fortnight to do some shopping, have a coffee and see how things are going. You never know, you may be able to step in and help a couple of supervisors who are dealing with a long line-up of enthusiastic buyers!

~Jim Green