

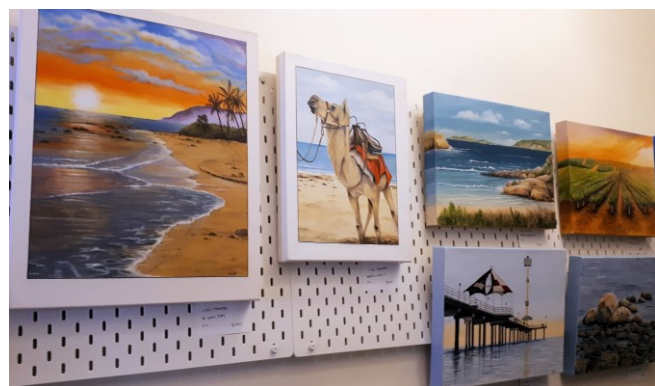
Branching Out at the Mockingbird

Earlier this year, Jean O'Brien and Lyn Thomas held an exhibition at the Mockingbird Lounge, in Glenelg South. The artwork fitted perfectly with the Café Bookshop's ambience and I believe some paintings were sold.

~Lee-Anne Kling



Delightful display by Jean O'Brien



Wonderful Works by Lyn Thomas

EXHIBITION OPPORTUNITIES in 2021

Ongoing — Brews and Views Café

Rotary Art Shows Go to www.rotaryartshow.org for information exhibitions, forms, and entry dates.

For more ideas, read Lynne Wong's Article on pp.3&4.

More Opportunities...

If you wish to display your work on our MAG website. Documents are ready if you would like to showcase your work. **For more information, see Jim Green.**

Privacy Policy: MAG members' personal information will be limited to MAG-purposes only. This information will not be conveyed or sold to a third party (including electronic means), without the member's consent. MAG will not be held responsible for any unintended use or disclosure of information.

To contact the Editor or MAG committee, go to the MAG website for details.

[President's Perspective continued...from page 1]

We do have our 'Brews with Views' Café 'rolling' exhibition which has been met with great comments from members of the local community and in some cases, with sales. You will find in this edition of the newsletter, other hints about exhibition opportunities you may like to pursue outside of what we organise as a whole group.

As we gather momentum into the new year of MAG activities and things become clearer, it may feel like...a shot of adrenalin into our veins!!

I am looking forward to working with our energetic committee and our vibrant community of artists to enjoy a fun, enlightening, and creative year at MAG.

~Jim Green

Backing Framing Supplies At MAG

To help our artists finish their art work off in a consistently professional way we encourage the membership to purchase the materials below:

materials	Unit Cost	4x	10x	20x
Plastic coated wire per metre	25c	\$1.00	\$2.50	\$5.00
Set of 'D' ring and 2 screws	50c	\$2.00	\$5.00	\$10
Pair 'Bumpers'	50c	\$2.00	\$5.00	\$10
Total for whole set.	\$1.25	\$5.00	\$12.50	\$25

Buy bulk; minimum purchase by eftpos \$5

BREWS AND VIEWS

Continues to roll on providing beautiful artwork to contemplate while enjoying one's coffee.



Overlooking Range by Lynne Wong



Shadow Play by Shirly Page



Cool Change from summer heat—Inarás Passage (Alaska) by Liz Maxted

Joke Corner

What do you call a wrongfully accused art thief?

"Framed".

Welcome to our **twenty-seventh** edition of iMAGine.

A DAUB FROM THE EDITOR



And now for something completely different...

New year, fresh start, wipe away the cobwebs and all that stuff associated with 2020, and get ready for 2021.

In my wanderings around the MAG studio of a Monday morning, I have noticed a number of my fellow artists, venturing into new styles and techniques. Some are replicating the works of the masters, or trying their hand with new styles, some innovating with new mediums, some are venturing to loosen up their watercolour techniques, while others, like me, are working on their pastel skills.

Although regular opportunities for selling paintings in the past have motivated artists in their craft, it seems while there are less exhibition prospects, MAG artists are being freed up to explore their creative endeavours.

So, I'm looking forward to the goodness, creativity and growth 2021 has to offer. ~Lee-Anne Kling

The Muse & Musers Have Returned...Again!



MAG committee 2021: (from left to right) Maggie, Lee-Anne, Lyn T, Jean, Judith, Jim, Henny, Ron, Christine, Lynne W, and Phil



MAG EVENTS 2021

Studio sessions from 9.30am till 12.30pm every Monday

Special events arranged so far:

March 1

Portrait Session & Brews and Views Changeover

March 8

Adelaide Cup Day—Informal studio session starting 10am

March 29

Brews and Views Changeover

April 5

Easter Monday

April 26

Committee Meeting

May 3

Portrait Session

May 24

Newsletter Release

THE PRESIDENT'S PERSPECTIVE

Sometimes there is a degree of apprehension when starting plans for a new painting. Gathering ideas, searching through photos, choosing reference images, and then making decisions about what to pursue for the next piece, which could become a successful creation. Or should I just experiment or do some warm-up painting tasks to get me in the mood for the next serious attempt.

Maybe this doubt is symptomatic of uncertain times in the conceivable immediate future. We don't know what will happen with a continued "covid" pandemic-influenced environment this year, but one thing does seem to be certain...a jab in the arm at some stage of 2021!

The MAG committee is in the same situation. It is challenging to make firm decisions about our activities and exhibition opportunities this year and do the required planning. The recent Member Survey was designed to see what our members would most like to see offered this year.

What we have decided is, that we will leave the first half of the year free of Shopping Centre Exhibitions and plan for a couple of these exhibitions for August and October. We shall see what happens. [Continued p.4...]

In the last newsletter I talked about inspiration and motivation. I find that I am more motivated to paint if I have a goal in mind.

Exhibitions and competitions can provide a goal. There is nothing better than seeing your paintings hanging on a wall or screen, and selling a painting is pretty wonderful. Getting your art out in the public domain can be daunting, especially in the past year, but there are opportunities coming up and hopefully we can put all our accumulated artworks out there and enjoy the process. I have listed a number of venues and ideas below that hopefully will inspire and motivate.

(1) Marion Art Group—we usually have 2-3 exhibitions per year, and we set up for 1-2 weeks in local shopping centres. MAG pays the shopping centre for the space, provides the sales desk, and screens and organises transport of these to and from the shopping centre. Such shopping centre exhibitions are dependent on a space being available to rent. We rely on a member's roster to provide people to manage the sales desk. There are entry fees which allow members to rent screen space in either a full, half or quarter screen of your work, or members can submit one painting or multiple unframed artworks for a small fee. These exhibitions usually result in members selling their paintings and are our favourite platform for sales.



A portion of Potential Candidates for future exhibitions from the Rocky Outcrop Group Creative Project displayed at MAG's 2020 AGM and Christmas celebration.

A commission is charged on paintings sold and the proceeds go to the club to cover exhibition costs.

(2) Brews and Views—a small gallery in the café at the Marino Community Hall. Members can display their paintings for four weeks. A roster allows interested people to have a turn. There is a commission fee if a painting is sold.

(3) Gallery 24/7—this is an online gallery that allows members to download their art for viewing online. Joining is free and allows a person to display 2 paintings on public view. You can upgrade to a "Plus membership" with a setup fee of \$55 and a yearly fee of \$126 a year (20 paintings displayed with ability to sell). Or you may upgrade to the Pro membership for set up of \$264 with \$326 annual fee (unlimited paintings for sale). Gallery 24/7 also lists and provides entry to many of the Rotary and other Art shows in both SA and interstate.

To access, type Gallery 24/7 in Google or another web browser, and then you can look around the website. Registering is relatively easy and they do have a good phone helpline if you get stuck.

(4) Rotary Art Shows—In South Australia, the most relevant for Marion Art Group members are the Flagstaff Hill, Blackwood and Victor Harbour Rotary Art Shows as well as the Glenside Lions, West Torrens and Clare Art shows. All of these can be accessed through Gallery 24/7 which act as event organisers. It can be tricky to download photos of your art for the entry but please approach a MAG committee member for help if you are needing assistance. These Art shows are major fundraisers for the organisations running them and they have entry fees and commission fees if you sell. You have to arrange delivery and pickup, but all other management is provided by the organisation. Art works may also be eligible for an art prize.

[Continued p.4]



Perfectly Placed—Abstract seascape by Judith Hombusch (watch this space in future editions.)

(5) SALA—the major visual art show for South Australia which is held every August. MAG tries to provide a SALA exhibition every year, but individuals may also arrange their own personal or small group exhibition. The SALA website can be accessed online, and you can register with an e-mail address and get regular updates of information. SALA provides all the promotion of the exhibitions and has a service matching an artist/art group with venues. There are entry fees and commissions may be charged by the venue depending on negotiations. The artist is responsible for set up and sorting out sales procedures at the venue.

Additional Exhibition opportunities...

(1) Royal Adelaide Show Competition and Exhibition: See the Royal Adelaide Show web page for details. Fees and commissions apply as well as art prizes.

(2) Campbelltown Art Show, May 2021: run by Rotary and the Campbelltown Council this art show can be entered online or by a written entry submission. It is not dependent on Gallery 24/7. Entry fees and commissions apply as well as art prizes.

(3) The Waterhouse Art Exhibition at the SA Museum—this is an open exhibition but has a selection process. Entry is \$55 but the prizes are substantial too. Well worth a look at the web site.



Port Noarlunga by Maryla Wawrzynski

(4) Marion Council and Gallery M—Gallery M has several exhibitions every year and also a shop that sells items of art and craft. Some of the exhibitions are restricted to people residing in the Marion Council area. Go to Gallery M, Marion Council web sites.

(5) Onkaparinga Council—there are three venues for art exhibition, Sauerbier House at Port Noarlunga, the Arts Centre Port Noarlunga and Fleurieu Arthouse at McLaren Vale. The Surf 2021 art exhibition with its ocean theme will be held in December 2021. The council also have pop up art shows called Art in the Park. Well worth having a look at the website.

(6) Art and Craft markets. I googled Art and Craft Markets in South Australia and came across a wide variety of city, suburban and country markets. Some are currently closed due to COVID 19 but hopefully they will return to normal sometime this year. Maybe a good opportunity to sell small paintings, cards and other items.

(7) Cafes, restaurants and even **doctor's surgeries** can provide wall space for art. It may be worth asking in a venue that is already displaying art if they would consider an exhibition of your work.

(8) There are several **gift shops** that provide an opportunity for artists to display and sell their work. I visited a terrific little gift shop in Willunga that sells the works of local artists. If you come across a good shop, it's always worth asking about a sales opportunity.

Give it a go, ask questions, and think outside the box. Look up web pages and get used to various web sites. There are many opportunities for getting your art out there on show.

~Lynne Wong

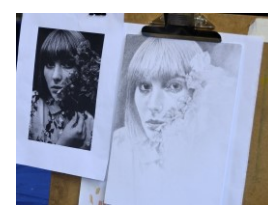
MAG OBITUARY NEWS

Sad to announce that Life Member, Jan Ullrich's husband Gunter passed away recently. Jan was President and then Exhibition Manager 2006-16 and Gunter was a well-known, jovial personality at MAG and its events during this time.

Similarly, Val Klix passed away January this year. Val was a popular figure at the club in the late 1990's early 2000's who continued attendance at Major events until 2018 at our 40th anniversary celebrations. Val's husband Fred Klix was our group's Patron for many years until he passed away in the early 2000's.

Jim Green

PORTRAITURE PRACTICE MAKES PERFECT



1st Monday of Month.

MAG Charity 2021

This year, Marion Art Group will be supporting **Lion Hearts Learning**. If you would like to find out more, check out their website:

<https://www.lionheartlearning.com>



Library Changes

Our faithful librarians have stepped down from their supervising roles, but the library lives on.

From now on, books and videos can still be borrowed. We are trusting that the items you borrow will return.

For members who prefer to pay their fees etc by bank transfer, the bank details are as follows:

Account name: MARION ART GROUP INC.
BSB number: 085 333
Account number: 77773 7765

IMPORTANT: Members will need to put their surname in the reference box, so we know who the payment is from.

Photos in this edition have been taken and provided by Maryla Wawrzynski, Lee-Anne Kling, & Lyn Thomas