

MAG AGM & Christmas

The AGM was held in the Community Hall with a brief meeting followed by an enjoyable light lunch. The morning was enlivened by a competition to guess the artist. Artists also had to select their favourite painting. Charlie and Eric were voted best in show. All participants had an unexpected gift of a voucher from *Art to Art*. The meeting was well attended.

The Christmas lunch was held at The Watermark Hotel at Glenelg. Again, most members of MAG attended. The buffet lunch was delicious and extensive and a good price.

Any feedback will be welcomed by the committee.

Lynne Wong



Cheers to a successful AGM: Lynne Wong and Jim Green

EXHIBITION OPPORTUNITIES in 2020

Noarlunga: May 4—10, 2020

Bayside, Glenelg: August (dates TBA)

Brighton Central: October (dates TBA)

Rotary Art Shows—Go to www.rotaryartshow.org for information exhibitions, forms and entry dates.

More Opportunities...

If you wish to display your work on our MAG website. Documents are ready if you would like to showcase your work. **For more information, see Jim Green.**

Privacy Policy: MAG members' personal information will be limited to MAG-purposes only. This information will not be conveyed or sold to a third party (including electronic means), without the member's consent. MAG will not be held responsible for any unintended use or disclosure of information.

To contact the Editor or MAG committee, go to the MAG website for details.

IN THE LOOP

Page 4



AGM Treat: A Good Spread by Brighton Foodland



*A delicious smorgasbord at the Watermark (above),
MAG members and partners
enjoying Christmas lunch
(Left)*



For members who prefer to pay their fees etc by bank transfer, the bank details are as follows:

Account name: MARION ART GROUP INC.

BSB number: 085 333

Account number: 77773 7765

IMPORTANT: Members will need to put their surname in the reference box, so we know who the payment is from.

...Continued from page 1

We have a wonderful Library we can access. Many books have not been borrowed for a long time. Our loyal Librarians Anne Bates and Marg Pope are in the process of culling the less popular books, but what they really want to be doing is helping people access our great resource. Sometimes we get involved in what we are doing and forget to take the time to look through our books and DVD's and do some borrowing.

Please consider helping to rejuvenate interest in our excellent collection of inspirational material.

Happy painting and have a great year at MAG.

Jim Green.

Issue

23

February
2020

Welcome to our **twenty-third** edition of **iMAGine**.

A DAUB FROM THE EDITOR



Finding Inspiration

Who or what inspires you? My grandma decorated her walls with paintings, works of a famous Central Australian artist, Albert Namatjira. My aunty followed suit. Her home was like an art gallery with a range of paintings from local South Australian artists. These works inspired me and perhaps have influenced my style and use of colour. Reflecting on Eric's "Peekaboo" Art Tips article on Page 3, I remember studying Albert Namatjira's painting of the Finke River, and the more I looked, the more I saw in it. Also, I was particularly taken with Thyrza Davey's works on the Barossa in a book she published, *Barossa and Beyond*. Her subtle use of tone and colour and capturing the mood of the landscape, made more real when I visited the Barossa and some of the scenes depicted in her paintings. So, I've started the year searching for inspiration. But I realized that inspiration is all around us—we just have to look.

~Lee-Anne Kling

iMAGine



BI-MONTHLY NEWSLETTER



AGM Art Admirers

MAG EVENTS 2020

Monday 24 February:

Studio Session & Committee Meeting

Monday 2 March:

Studio & Portraiture Session

Monday 9 March:

Public Holiday: No Session

Monday 16 March:

Studio Session & Pastel Workshop

Monday 23 March:

Studio Session

Monday 30 March:

Studio Session & Committee Meeting

Monday 6 April:

Studio & Portraiture Session

Monday 13 April

Public Holiday: No Session

Monday 20 April

Studio Session & Pastel Workshop

Monday 27 April

Studio Session & Committee Meeting

Monday 4 May

Studio & Portraiture Session

Colonnades Exhibition Starts

Sunday 10 May

Colonnades Exhibition Finishes

Monday 11 May

Studio & Still Life Session

Monday 18 May

Studio Session & Newsletter 24 Release

Page 1

Editorials, Events... P.1
Artist in Focus, Photos and
Committee Member List... P.2

Art Tips: ... P.3

Up-coming Exhibitions, ,
President's Perspective
continued...P.4



THE PRESIDENT'S PERSPECTIVE

Welcome everyone to yet another year in the life of The Marion Art Group. I hope that, like me, you are looking forward to a fulfilling and creative artistic journey throughout the year.

Did you know that my painting style has been greatly influenced by the work of Belgian Surrealist, Rene Magritte. His 'canvas in front of the window' paintings, his 'Empire of Lights' series and his optical surreal piece 'Cort Blanch', in particular, had a profound effect on me as a younger artist. As I revisit Magritte's work, I can see the influence on my current artwork. You may be interested in looking through some books on the Surrealists or logging into *Google* to see what I am talking about. There is no doubt I have also been influenced by the French and Australian impressionists.

Sometimes we are searching for the subject, the idea we want to convey, or the feeling we want to express for our next piece and struggle to come up with a new concept that resonates. If you think it might help, flick (or scroll) through paintings from history or by contemporary artists. Inspiration can be found.

[Continued p.4]

Marion Art Group Website: marionartgroup.org

Artist in Focus: Glenys Brokenshire

When clearing my Mother's cupboards recently I found some cards I'd made as a child. They were extremely basic but had meant enough to her for her to save them. They'd been appreciated and I'd been encouraged. Don't we all need encouragement?

I kept drawing and over the years went to various classes to learn the skills for watercolour, oils and acrylics. I didn't always 'stick to the script' but I kept drawing, painting and experimenting.



Eventually my husband pointed out we lived near the Marion Art Group's venue. He pushed (nagged) me to join. Suddenly I was with a group of like-minded people.

Going to MAG on a regular basis helped me focus on what I was producing. The regular portrait and still life groups helped hone my drawing skills, while demonstrations by professional artists re-awoke the urge to experiment. Sharing ideas with other group members was invaluable in developing new skills and refining my work. I don't paint to a formula to make sales but look for inspiration in the world around us.

Someone whose work I admire is John Russell, 'the forgotten impressionist.' His brushwork and the quality of the light in his paintings is something I'd love to achieve. Google him.

Meanwhile I'll keep practicing and enjoying . . .

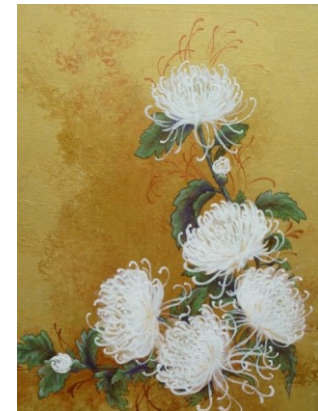
Glenys Brokenshire



Glenys' animal portraits are much sought-after



Portrait by Glenys



Flowers by Glenys

MAG Committee Members 2020

President: Jim Green

Vice president/Exhibition Manager: Maggie Turner

Treasurer: Phil Farrant

Assistant Treasurer/ Admin Officer: Kay Hague

Secretary: Christine Creese

Newsletter Editor: Lee-Anne Kling

Facebook Editor: Lyn Thomas

Committee: Eric Payne, Lyn Thomas, Jean O'Brien, Lynne Wong

Thank you for being willing to serve and help with the smooth and successful running of Marion Art Group.

Hello everybody.

Being as how this column is supposed to be about art tips, I will try and make that the focus and not meander off as I often do. So, what to talk about? I was doing some research into the importance of composition in landscape paintings, and painting generally, and one of the consistent principles was that of leading the viewer's eye not only to the focal points, but also back into the painting generally. Ok, nothing new there. However, further research discovered that there is more, quite a bit more, to the leading of the viewer's eye. And that something is called the 'peek-a-boo principal'.

I came across the work of V.S. Ramachandran who is a professor of neuroscience and psychology at the University of California, San Diego. His work involves looking into the various brains of people generally, but particularly people who look at art. He has come to the conclusion that things are better when they are less visible.

It appears that humans are hardwired to solve puzzles. Further, the curiosity is more compelling than the part where you get the solution. This is how he explains the popularity of abstract art. It seems our tiny brains are forever on the lookout for magic, or as he calls it: *wizardry*.

Art Tips: Peekaboo



Inspirational: Horner's Bridge by Jim Green

He thinks we are hardwired for what he calls 'ultra-normal stimuli.' It's a bit like religion which offers the possibility of the transcendent, the divine, the paranormal. Having been involved in several exhibitions now, I have thought much about why people desire (buy!) such & such and not so and so. Incidentally I am nowhere near any kind of enlightenment. (As a sidebar it appears that the underlying principle in terms of art appreciation of 'eye of the beholder' is perhaps an overriding principle.)

Nonetheless, the theme of this piece still holds true because the need to problem solve is as individual as the solver. I had a young person buy one of my paintings of a barn. And the reason she bought it was because it looked like her barn. I have also heard a couple say, "I don't know why we both love it. But we're definitely taking it."

It seems to me that those two reasons pretty much cover the gamut. On the one hand, the problem was solved simply because of direct association:

The barn looks like my (her) barn. On the other hand, the problem was solved on a much more visceral, subconscious level, the solution being: We like it.

To sum up then: the "peekaboo" principal which could equally be called the principle of mystery, if applied to our work, gives that work a bit of a leg up in terms of viewer engagement. A painting featuring a trail or road leading into the distance is part of the mystery we humans relish. Where will it lead to? The painting becomes more appealing. With abstract art, not only is there the mystery of the possibilities. But also, the appeal of analysing patterns, something we humans also seemed hardwired to do. (I must admit that abstract art in many cases is a mystery to me!)

Nothing new here, for most if not all. But perhaps it's good to be reminded that it seems a little mystery can go a long way.

Cheers.

~Eric Payne

QUOTE OF THE MAG

To be an artist means never to look away.

—Akira Kurosawa
(Japanese cinema director)

MAG Charity 2020

This year, Marion Art Group will be supporting **Lion Hearts Learning**. If you would like to find out more, check out the **Lion Hearts Learning** website:

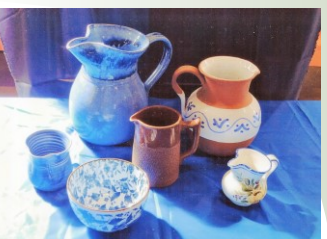
<https://www.lionheartslerninn.com>



PORTRAITURE PRACTICE MAKES PERFECT



1st Monday of Month.



Have a go at STILL LIFE

2nd Monday of Month.

Have a Play with Pastels



3rd Monday of the Month

MAG LIBRARY...a great resource of books and videos for your art...



Your friendly librarians:
Margaret Pope & Anne Bates

Photos in this edition have been taken and provided by Maryla Wawrzyski, Lee-Anne Kling, & Lyn Thomas

Works Developing for 2020



Stunning snow scene by Maggie Turner



Still Life in the making



Sharing progress and inspiring each other:
Rosemarie Libiseller (left) and Maryla Wawrzyski (right)