

## Fred Klix

Fred Klix was MAG's patron for three years. Fred was a famous South Australian painter known especially for his paintings of the Flinders Ranges.

In our MAG library we have one of his books showing all the beautiful gum trees he used to paint. We still keep in touch with his widow, Val Klix and she enjoys coming to our Christmas lunch each year.

### Artist saw a bigger picture

**Frederick Ronald Klix**  
Artist  
**Born:** October 6, 1917; Sunshine, Victoria  
**Died:** June 30, 2003; Adelaide

FRED Klix was a well-known South Australian commercial artist and landscape painter. He was art director of two of Adelaide's leading advertising agencies and a book publishing company, and became a council member of the Royal SA Society of Arts.

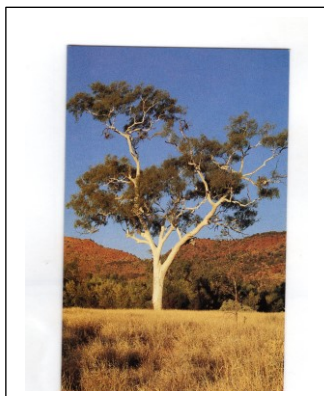
Fred was also an honorary life member and patron of the Marion Art Group, and lectured and demonstrated at several art societies. He had two books of Flinders Ranges paintings published and his paintings are represented in collections in all states of Australia, in the US, Canada, UK, Germany, Italy, South Africa, Indonesia, Japan, Switzerland and Singapore.

The youngest of four children, Fred was a reserved child who did well at school. He was deeply involved in the Methodist Church in Sunshine, Victoria, where he grew up, and also in the Scouting movement. At the age of 10 he became, then, the youngest child in Victoria to attend a secondary school and also the youngest to proceed to the Melbourne Institute of Technology. There he came under the influence of art teachers John Rowell and M. Napier Waller.

On graduation he worked as an art teacher at Preston Technical College.

During World War II he served in the Middle East with a survey unit. After the war he resumed teaching in Melbourne before moving to Adelaide and a career in commercial art.

The church was a significant part of his life and he "fellowshipped" in many churches in Adelaide. He is survived by his wife Valma, whom he married in 1945, a son, daughter, and two grandchildren.

### A Poem (in part from Merna Mora)

*Click goes the Fred boys,  
Click, click, click,  
Wide is his lens  
And his finger moves quick,  
The painters look around for a lovely scene to pick,  
And follow the old Fred for the click, click, click.*



Quorn Art Trip 2008

## Marion Art Group—In the Beginning

In 1978, Sue Shilling and two fellow artists found that lessons with Arthur Phillips, though entertaining and good, were not enough; they wanted more. At first, they met together and painted on another day of the week.

Then, Sue considered that there may be others in Marion who might enjoy an art group. So, she put an advert in the local paper for anyone interested in joining them to get in touch with her. Much to her surprise, over 30 people responded. One of those who joined was Rae Long who is still in MAG today.

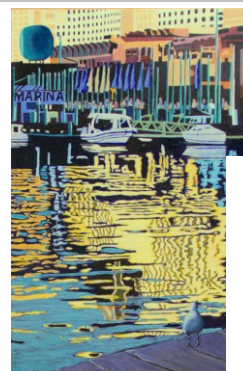
Sue and her friends then wondered how they were going to fit all those people in a house and decided that the best plan of action was to hire a hall. Thus, it came to pass that a hall was hired in Warradale, near Oaklands Railway station, and Marion Art Group was born. MAG soon ventured into the business of holding exhibitions, including outdoor displays along North Terrace in the city.

Over the next ten years, the group grew and grew in numbers...until MAG had to find a larger space to accommodate all the keen and aspiring artists who had joined. But where? And when? How? The situation became critical when news broke that the hall in which they gathered was to be demolished to make way for a housing development.

Marion Art Group approached Marion Council. Could they help? Yes, much to MAG's joy, the council offered tenancy of Marino Community Hall. MAG moved to Marino Community Hall in 1989 and in that same year, mid-year lunches became a tradition.

In 1990's MAG member Fred Klix, a famous Australian landscape artist, offered to mentor the group and in 2000 became its patron. With Fred Klix at MAG's helm, some happy and memorable years, ensued.

Another highlight from the halcyon '90's was the opening of the Kathleen Smith Library. Kathleen was a much-loved member of the group. Also special, were bus trips and art camps to scenic spots around South Australia, especially, the Flinders Ranges. Des Barnett did a sterling job organising many of these excursions into the scenic wonders of S.A. *(continued p.8)*



## Maggie Turner

Maggie, a long-time member of MAG, joined in the early 90s. She likes the friendly social aspect of the group as well as the input and positive critique from fellow artists. Most of all, she just loves to paint.

She has tried pastels, oils and watercolour, but her favoured medium is acrylic. She finds it more forgiving than watercolour as it is easier to fix mistakes. Also, she likes to paint from dark to light. Her work is very intricate; she loves the detail and is prepared to put time into her work. One of her most recent paintings, *Darling Harbour Sydney* (featured above), took 25 hours to complete. Preferring large size works, her paintings are usually 60 by 90 cms. When starting a painting, she is not preoccupied with composition. If Maggie sees something of interest, she first draws it up. With colour scheme in mind, from the photo as a base, she modifies the image as she paints.

Her favourite artist is Vincent van Gogh for the vibrancy of his work. She also loves Dali's surrealism. Another favourite is the Australian artist Margaret Preston. She loves the dark outline around Preston's flowers, and we can see this influence in Maggie's work.

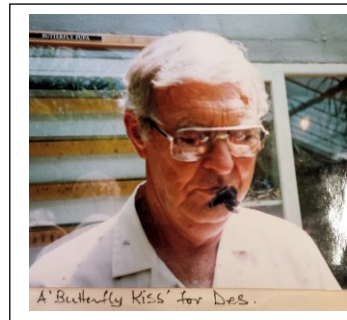
Her advice to budding artists is to practise and not compare one's work with that of other artists. Be inspired by their work, not discouraged. Most importantly, paint for your own personal pleasure.

~ Helen Bowering

# iMAGine in History

## MAG EVENTS 40 years AT A GLANCE

- 1978**  
Suzanne Shilling and Bob Pavey formed group to meet in Warradale Institute hall.
- 1979**  
Cooinda, City of Marion opened. Several MAG members taught art there.
- 1985**  
Marion Art Group Inc.: 1<sup>st</sup> constitution registered.
- 1995**  
1<sup>st</sup> Portrait Sessions started by Wanda Madigan.
- 1987**  
First camp of many to come (Coorong)
- 1988**  
10-year celebration Lunch
- 1989**  
July 24 moved to Marion Community Hall
- 1996**  
1st exhibition at Marino Community Hall.
- 1997**  
New exhibition Screens constructed.
- 1998: 20-year celebration**  
A 1<sup>st</sup>: members hang paintings without pre-selection.  
1<sup>st</sup> Unframed Paintings for sale.
- 2003: 25-year birthday celebrations**  
Midyear lunch and demo.
- 2008: 30<sup>th</sup> Birthday celebration**  
1st Exhibition at Gallery M--MAG members demo.
- 2009**  
Kingston Clinic permanent displays started.
- 2011**  
Max Mansell Indigenous Creative Group Project.
- 2014**  
Stobie Pole creative group project. Up-dated Constitution & 'Operations Guidelines'.
- 2015**  
Creative Group project-- Jigsaw paintings.
- 2016**  
Autism SA, Fund Raiser at Marino Community hall.  
New style bi-monthly newsletter.  
Birth of the Marion Art Group Website.
- 2017**  
Partnership with Flagstaff Hill Rotary Art Show.
- 2018**  
'MAG meets SALA' at Marino Community Hall. Year of "Miniature". On-line with a MAG Inc. Facebook page.



## Des Barnett (An Extract from Artist in focus iMAGine 5)

In my day there was no art taught at school and I often wondered how I'd go. So, I went to art class at night for 3 years from 1979 to 81. I thought I knew it all and would paint at home. That gradually fizzled out and on retirement in 1987, after painting the house, then a 2-month holiday with wife June in Queensland, I joined MAG.

I had known about the group and we met at a small Council hall Corner of Morphett Road and Murray Terrace. We had exhibitions at church halls, wineries as well as shopping centres, and with our wooden A-frame they fitted snugly onto my 4W/D pack-rack.

Even had an exhibition on the lawns on North Terrace outside Government House for a week. I was up before 7am, loaded with racks and paintings, and with others set it up.

Then in the late 1980's, the hall and land was sold and we came here to this lovely hall at Marino that really suits our needs.

I was on committee for several years and president for 2 and the group has been a big part of my retirement. Very happy with it all. Quote: Youth is a gift of nature. Age is a work of art. ~ **Des Barnett**







Forever Friends—Faye Ross, Kerry bond and Kaylene Scott



The Screen Team 1997—Bruce Stock, Lawrie Powell, Walter Gray, Kerry Logan & Bruce Schrader



Kerry Logan



Library Staff—Natalie Lewcock and Margaret Bawlden

## Exhibitions



Alpana Station 2002



North Terrace



Shopping Centre Exhibition—May 3, 1999



The Advertiser Open-Air Art Exhibition 1988-1992

## MAG History in the News



Fame and glory

## The Evolution of MAG Camps, Christmas & Celebrations



Flinders happy Campers 2009



Life Members 1988



More Quorn



Former Presidents 1995: (Back L-R: Eileen Shaw, Rae Long, Dulcie Gibbert, Walter Gray, Natalie Lewcock. Front L-R: Muriel Whelan & Aileen Frost)



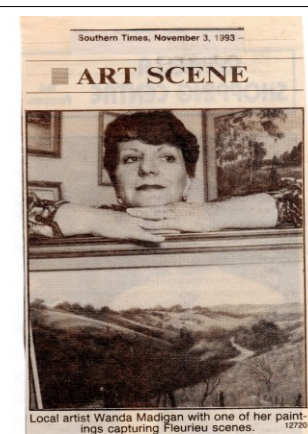
Christmas Celebrates new elected committee for 2009



Prize-winning



A much-younger Bob—1993



Vales captured on canvas

CAPTURING the character of the Southern Vales and Fleurieu Peninsula is the aim of the Marion Art Group's latest exhibition, the Dance of the Southern Vales. The group chose the region in a bid to attract a wider audience to its exhibitions.

In March this year the group spent a day in the heart of the vales, choosing subjects, taking photos and making preliminary drawings and sketches. Southern Vales artist Peter Findlay was then asked to comment on the works.

The exhibition features 55 works by more than 40 Marion Council residents.

The exhibition will be opened by Mayor Colin Haines at 2pm on Saturday, November 6, at the Marion Chambers Gallery, 245 Sturt Rd, Sturt. It then will be open Monday to Friday, 9.30am to 4.30pm, and 2pm to 4pm Sundays (except Sunday, November 7), until November 29. Visitors are advised to phone 375 6600 before their visit.

Wanda Madigan



Painting in the Square

WATCH out for trolley collisions at Mitham Square next week as shoppers have their heads turned by hundreds of paintings from the Marion Art Group.

Group president Jan Ulrich says the group is in its 30th year.

Member Fred Looman, 70, who has been painting for 30 years, is donating his work to the exhibition, runs from March 10 to 12 at Mitham Square Shopping Centre.

"You have to be of a reasonable standard to join the group as it's not a haphazard group as such," Mr Ulrich says.

The art group is in its 30th year.

Member Fred Looman, 70, who has been painting for 30 years, is donating his work to the exhibition, runs from March 10 to 12 at Mitham Square Shopping Centre.

Head-turning



Sue Shilling cutting cake—20th anniversary



In Grampians



Robe Art Trip 1993

Photos in this edition have been provided by MAG archives and Rae Long.

